

# Installation instruction

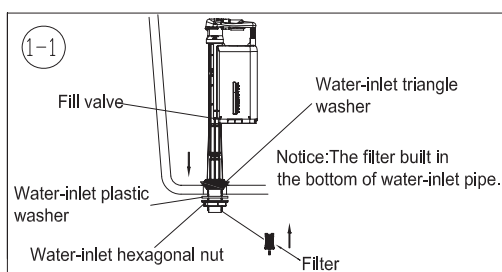
**INSTRUCTION**

1. Please read carefully the following instruction. In order to avoid injuring body or damaging equipment, please install the equipment following the instruction step by step.
2. The Instructions are compiled according to the up-to-date production information. we reserve the rights to make the changes about specifications, packaging and sullying without prior notice.
3. When valve installed, the point of discharge to the overflow pipe must be greater than 34mm. The water level to the overflow pipe must be greater than 25mm.
4. We shall not be responsible for any failure of using any parts from other companies.
5. Water temperature: 2°C-23°C
6. Water pressure: 0.01Mpa-1Mpa.

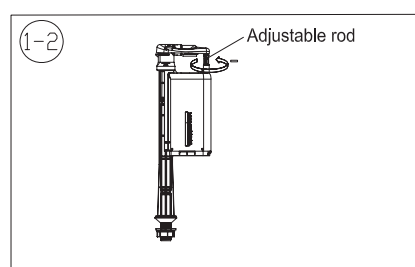
**Warning**

DO NOT USE OR DROP ANY CHLORINE OR ANY CHEMICAL RELATED COMPONENTS. USE OF SUCH PRODUCTS WILL (1) RESULT IN DAMAGE TO CISTERN COMPONENTS AND MAY CAUSE FLOODING AND PROPERTY DAMAGE AND (2) VOID WARRANTY. DO NOT OVERTIGHTEN OR CISTERN/BOWL MAY CRACK.

## A. Inlet valve install

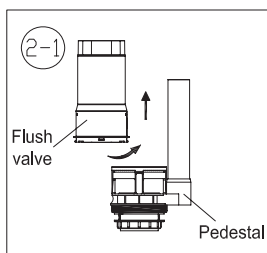


Put fill valve & water-inlet triangle washer insert into water-inlet hole of water tank, then, cover water-inlet plastic washer and hexagonal nut in turn from the bottom of fill valve. Fastening water-inlet hexagonal nut and make a proper adjust according to the size of water tank.

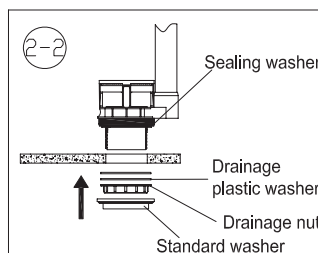


By rotating the blue screw, the water level increases when rotating clockwise and decreases when rotating counterclockwise

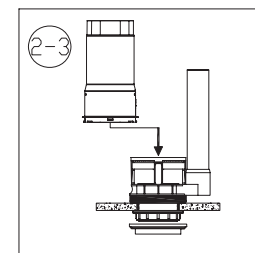
## B. Flush Valve Installation



Circumrotate drainage body and make it remove from pedestal.

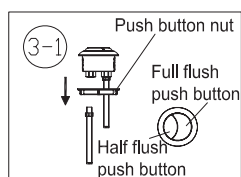


Let pedestal insert into outfall from inside of warter tank, cover the sealing washer, drainage plastic washer, then, circumrotate drainage nut and cover the standard washer, and it can adjust the put angle properly according to the actual size of water tank.

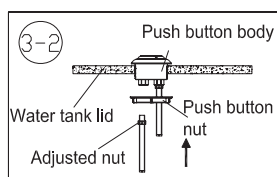


Install flush valve.

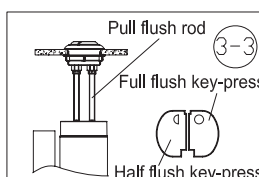
## C. Push-button Installation



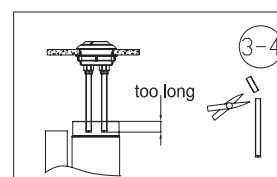
Screw off push button nut.



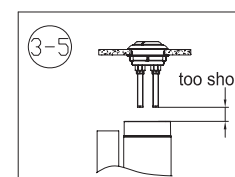
Let push button insert into water tank lid middle hole, screwing on push button nut from the bottom of water tank lid, then, screwing sure that it is firm.



Please confirm pull flush rod press the flush valve key-press whether or not and check it is blocked or not.



Screw off pull flush rod, the cut part is upside.



Pull flush rod should aim at the full flush key-press.

Notice: If the products is different from the photo shown, please refer to the actual product.